

Sumitomo



Promotions

4
~~Three~~ ways to Save
with Sumitomo!



WGX Series

WEX Series

WFX Series

DGC Series

**Buy 30 Inserts
get 10 FREE!**

**Offer valid through
June 30, 2014**



1001 Business Center Drive, Mt. Prospect, IL 60056-6080
P.O. Box 545, Mt. Prospect, IL, 60056-0545
800-950-5202 • 847-635-0044 • FAX: 847-635-7866
www.sumicarbide.com

WGX 45° Face Mill for facemilling applications



Features & Benefits

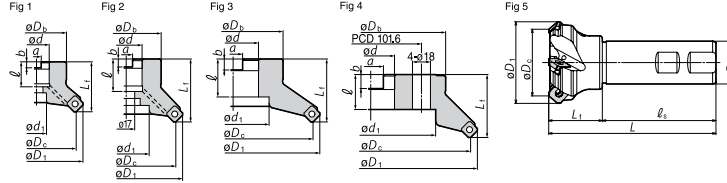
Stable Machining

Special chipbreaker designed for WGX Type ensures low cutting resistance

High Quality

Improved run-out precision and unique wiper edge shape ensure excellent surface finish quality
Optimized chamfer shape reduces burrs and edge chipping

Max Depth of Cut: 6mm (0.240")



**Excellent surface finish!
Eliminate burrs!**

**Kit includes:
Milling Cutter
and 10 Inserts**

WGX Cutter Bodies-Coarse Pitch-INCH

Catalog No.	φD _C	φD ₁	φD _B	L _f	φd	φd ₁	a	b	ℓ	Teeth	Weight (lbs)	Fig.	Buy 1 Get 1 FREE	WGX Kit Price*	Buy Inserts Get Cutter FREE
WGX42000R	2.000	2.461	1.500	1.750	0.750	0.609	0.312	0.190	0.750	3	0.9	1	BUY ONE GET ONE FREE	\$264.00	100
WGX42500R	2.500	3.008	1.750	1.750	1.000	0.797	0.375	0.220	0.750	4	1.3	1		\$292.00	110
WGX43000R	3.000	3.504	2.250	1.750	1.000	0.787	0.375	0.220	0.750	4	2.2	1		\$315.00	120
WGX44000R	4.000	4.500	2.870	2.000	1.250	1.000	0.500	0.280	0.750	5	3.5	2		\$387.00	150
WGX45000R	5.000	5.496	3.750	2.500	1.500	2.000	0.625	0.380	1.000	6	7.2	1		\$469.00	180
WGX46000R	6.000	6.496	4.380	2.500	1.500	2.000	0.625	0.380	1.060	7	9.5	3		\$530.00	200
WGX48000R	8.000	8.496	5.906	2.500	2.500	5.118	1.000	0.560	1.594	8	15.6	4		\$659.00	250
WGX410000R	10.000	10.492	7.480	2.756	2.500	6.299	1.000	0.531	1.575	10	23.5	4		\$936.00	350

WGX Cutter Bodies-Fine Pitch-INCH

Catalog No.	φD _C	φD ₁	φD _B	L _f	φd	φd ₁	a	b	ℓ	Teeth	Weight (lbs)	Fig.	Buy 1 Get 1 FREE	WGX Kit Price*	Buy Inserts Get Cutter FREE
WGX42000R	2.000	2.461	1.500	1.750	0.750	0.609	0.312	0.190	0.750	4	0.9	1	BUY ONE GET ONE FREE	\$288.00	100
WGX42500R	2.500	3.008	1.750	1.750	1.000	0.797	0.375	0.220	0.750	5	1.9	1		\$316.00	120
WGX43000R	3.000	3.504	2.250	1.750	1.000	0.787	0.375	0.220	0.750	6	3.1	1		\$351.00	130
WGX44000R	4.000	4.500	2.870	2.000	1.250	1.000	0.500	0.280	0.750	7	4.8	2		\$423.00	160
WGX45000R	5.000	5.496	3.750	2.500	1.500	2.000	0.625	0.380	1.000	8	7.2	1		\$504.00	190
WGX46000R	6.000	6.496	4.380	2.500	1.500	2.000	0.625	0.380	1.060	10	9.5	3		\$646.00	230
WGX48000R	8.000	8.496	5.906	2.500	2.500	5.118	1.000	0.560	1.594	12	15.6	4		\$788.00	290

WGX Cutter Bodies-Extra Fine Pitch-INCH

Catalog No.	φD _C	φD ₁	φD _B	L _f	φd	φd ₁	a	b	ℓ	Teeth	Weight (lbs)	Fig.	Buy 1 Get 1 FREE	WGX Kit Price*	Buy Inserts Get Cutter FREE
WGX42000R	2.000	2.461	1.500	1.750	0.750	0.609	0.312	0.190	0.750	5	0.9	1	BUY ONE GET ONE FREE	\$323.00	120
WGX42500R	2.500	3.008	1.750	1.750	1.000	0.797	0.375	0.220	0.750	6	1.5	1		\$355.00	130
WGX43000R	3.000	3.504	2.250	1.750	1.000	0.787	0.375	0.220	0.750	8	3.1	1		\$398.00	150
WGX44000R	4.000	4.500	2.870	2.000	1.250	1.000	0.500	0.280	0.750	10	4.7	2		\$517.00	180
WGX45000R	5.000	5.496	3.750	2.500	1.500	2.000	0.625	0.380	1.000	12	8.2	1		\$611.00	220
WGX46000R	6.000	6.496	4.380	2.500	1.500	2.000	0.625	0.380	1.060	16	10.5	3		\$731.00	270
WGX48000R	8.000	8.496	5.906	2.500	2.500	5.118	1.000	0.560	1.594	20	15.2	4		\$960.00	330

Cutter diameters 6.000" and above do not have coolant holes

WGX Cutter Bodies - Shank - INCH

Catalog No.	φD _C	φD ₁	φD _S	L _f	ℓ _S	L	Teeth	Fig.	Buy 1 Get 1 FREE	WGX Kit Price*	Buy Inserts Get Cutter FREE
WGX42000EW	2.000	2.461	1.250	1.591	2.379	3.970	4	5	BUY ONE GET ONE FREE	\$277.00	100
WGX42500EW	2.500	3.008	1.250	1.591	2.379	3.970	5	5		\$315.00	120

Inserts	Material							Dimensions		
	P	K	M	S	N	H1	IC	Thickness	Facet Width	
SEMT13T3AGSR-L	●	●	●	●	●	●	0.528	0.156	0.0787	
SEMT13T3AGSR-G	●	●	●	●	●	●				
SEMT13T3AGSR-H	●	●	●	●	●	●				
SEMT13T3AGSR-FG	●	●	●	●	●	●				
SEET13T3AGSR-L	●	●	●	●	●	●				
SEET13T3AGSR-G	●	●	●	●	●	●				
SEET13T3AGSR-L	●	●	●	●	●	●				
SEET13T3AGFR-L	●	●	●	●	●	●				

*Suggested Retail Price in USD

Part Exit Comparison

Competitor A



Competitor A leaves burrs

WGX



WGX leaves no burr

Offer valid through June 30, 2014

DGC 45° Lead Face Mill

for steel & cast iron milling



Features & Benefits

Superior economy

With the same sharpness of similar one-sided inserts, you get twice the corners. Also, the cutter body holds both the ONMT & SNMT inserts (no shim change), allowing up to 16 corners

Sumitomo WGX and DGC Comparison

Needs	Surface Finish	Cutting Force	High Feed Rate	Insert Strength	Chip Evacuation	Cost Per Edge	General Versatility
Recommend	WGX	WGX	DGC	DGC	WGX	DGC	WGX

Up to 8 corners with SNMT inserts!
Up to 16 corners with ONMT inserts!

DGC Cutter Bodies - Coarse Pitch - INCH

Catalog Number	ϕD_c	ϕD_1	ϕD_b	L_f	ϕd	ϕd_1	a	b	ℓ	Teeth	Fig.	Buy 1 Get 1 FREE	DGC Kit Price*	Buy Inserts Get Cutter FREE
DGC42000R	2.000	2.567	1.500	1.750	0.750	0.609	0.312	0.190	0.750	3	1	BUY ONE GET ONE FREE	\$334.00	80
DGC42500R	2.500	3.067	1.750	1.750	1.000	0.797	0.375	0.220	0.750	4	1		\$396.00	90
DGC43000R	3.000	3.567	2.250	1.750	1.000	0.787	0.375	0.220	0.750	4	1		\$414.00	90
DGC44000R	4.000	4.567	2.870	2.000	1.250	1.000	0.500	0.280	0.750	5	1		\$538.00	110
DGC45000R	5.000	5.567	3.750	2.500	1.500	2.000	0.625	0.380	1.000	6	1		\$584.00	120
DGC46000R	6.000	6.567	4.380	2.500	1.500	2.000	0.625	0.380	1.060	7	2		\$779.00	170
DGC48000R	8.000	8.567	5.906	2.500	2.500	5.118	1.000	0.560	1.594	8	3		\$957.00	210
DGC410000R	10.000	10.567	7.480	2.756	2.500	6.299	1.000	0.531	1.575	10	3		\$1,190.00	250

DGC Cutter Bodies - Fine Pitch - INCH

Catalog Number	ϕD_c	ϕD_1	ϕD_b	L_f	ϕd	ϕd_1	a	b	ℓ	Teeth	Fig.	Buy 1 Get 1 FREE	DGC Kit Price*	Buy Inserts Get Cutter FREE
DGCM42000R	2.000	2.567	1.500	1.750	0.750	0.609	0.312	0.190	0.750	4	1	BUY ONE GET ONE FREE	\$363.00	90
DGCM42500R	2.500	3.067	1.750	1.750	1.000	0.797	0.375	0.220	0.750	5	1		\$429.00	100
DGCM43000R	3.000	3.567	2.250	1.750	1.000	0.787	0.375	0.220	0.750	6	1		\$477.00	110
DGCM44000R	4.000	4.567	2.870	2.000	1.250	1.000	0.500	0.280	0.750	7	1		\$609.00	130
DGCM45000R	5.000	5.567	3.750	2.500	1.500	2.000	0.625	0.380	1.000	8	1		\$646.00	140
DGCM46000R	6.000	6.567	4.380	2.500	1.500	2.000	0.625	0.380	1.060	10	2		\$956.00	200
DGCM48000R	8.000	8.567	5.906	2.500	2.500	5.118	1.000	0.560	1.594	12	3		\$1,154.00	240

DGC Cutter Bodies - Extra Fine Pitch - INCH

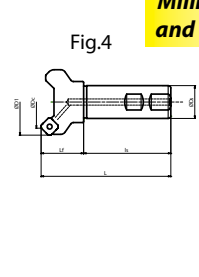
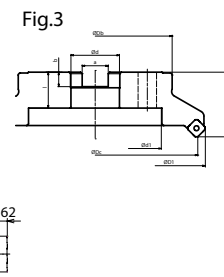
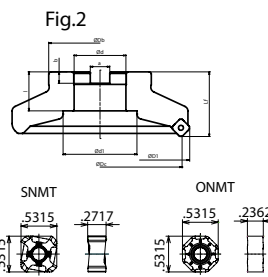
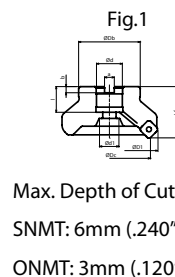
Catalog Number	ϕD_c	ϕD_1	ϕD_b	L_f	ϕd	ϕd_1	a	b	ℓ	Teeth	Fig.	Buy 1 Get 1 FREE	DGC Kit Price*	Buy Inserts Get Cutter FREE
DGCF42000R	2.000	2.567	1.500	1.750	0.750	0.609	0.312	0.190	0.750	5	1	BUY ONE GET ONE FREE	\$390.00	100
DGCF42500R	2.500	3.067	1.750	1.750	1.000	0.797	0.375	0.220	0.750	6	1		\$459.00	110
DGCF43000R	3.000	3.567	2.250	1.750	1.000	0.787	0.375	0.220	0.750	8	1		\$512.00	130
DGCF44000R	4.000	4.567	2.870	2.000	1.250	1.000	0.500	0.280	0.750	10	1		\$792.00	160
DGCF45000R	5.000	5.567	3.750	2.500	1.500	2.000	0.625	0.380	1.000	12	1		\$820.00	170
DGCF46000R	6.000	6.567	4.380	2.500	1.500	2.000	0.625	0.380	1.060	14	2		\$1,031.00	210
DGCF48000R	8.000	8.567	5.906	2.500	2.500	5.118	1.000	0.560	1.594	16	3		\$1,215.00	250

DGC Cutter Bodies - Shank - INCH

Catalog Number	ϕD_c	ϕD_1	ϕD_b	L_f	ℓ_s	L	Teeth	Fig.	Buy 1 Get 1 FREE	DGC Kit Price*	Buy Inserts Get Cutter FREE
DGC42000EW	2.000	2.567	1.250	1.591	2.379	3.970	4	4	BUY ONE GET ONE FREE	\$351.00	90
DGC42500EW	2.000	2.567	1.250	1.591	2.379	3.970	5			\$424.00	100

*Suggested Retail Price in USD

Catalog Number	Inserts				
	ACP100	ACP200	ACP300	ACK200	ACK300
SNMT13T6ANER-L	●	●	●	●	●
SNMT13T6ANER-G	●	●	●	●	●
SNMT13T6ANER-H	●	●	●	●	●
SNMT13T6ANER-FL	●	●	●	●	●
SNMT13T6ANER-FG	●	●	●	●	●
ONMT05T6ANER-L	●	●	●	●	●
ONMT05T6ANER-G	●	●	●	●	●
XNEU13T6ANEN-W	●	●	●	●	●



Kit includes: Milling Cutter and 10 Inserts

Offer valid through June 30, 2014

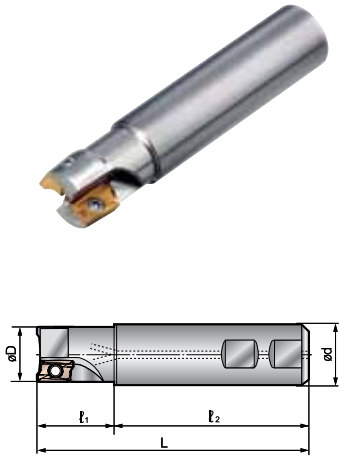
WEX Indexable Milling

90° End/Shell Mills



Features & Benefits

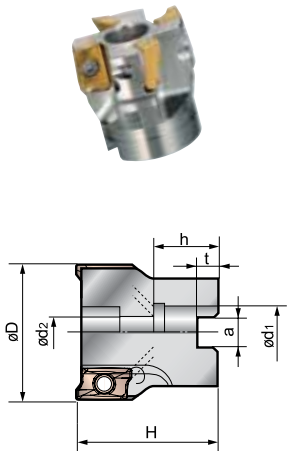
- The unique shape and strength of the cutting edge has been optimized resulting in reduced cutting forces
- Available in 4 different insert geometries
- A wide range of machining applications due to the new "Super ZX" and "Super FF", and diamond-like carbon coatings
- Cutter body and insert strength provide for high feed rate capabilities
- Efficient chip removal due to air/coolant hole design



Catalog No.	Dimensions (Inches)					Ramp Angle	# of Teeth	Buy 1 Get 1 FREE	WEX Kit Price*	Buy Inserts Get Cutter FREE	
	D	d	L	ℓ_1	ℓ_2						
AXMT12	WEX20500EW	0.500	0.750	3.325	1.309	2.031	5°	1	BUY ONE GET ONE FREE	\$148.00	60
	WEX20625EW	0.625	0.625	3.218	1.312	1.906	4°	2		\$151.00	80
	WEX20625EMW	0.625	.0625	3.591	1.685	1.906	4°	2		\$156.00	80
	WEXC20750EW	0.750	0.750	3.561	1.530	2.031	4°	2		\$157.00	80
	WEXC20750ELC	0.750	0.750	8.000	2.000	6.000	4°	2		\$170.00	80
	WEX20750EW	0.750	0.750	3.561	1.530	2.031	4°	3		\$169.00	90
	WEX20750EMW	0.750	0.750	4.091	2.060	2.031	4°	3		\$181.00	90
	WEX20750ELW	0.750	0.750	5.091	3.060	2.031	4°	3		\$189.00	90
	WEX21000EW	1.000	1.000	3.811	1.530	2.281	2°	4		\$185.00	100
	WEX21250EW	1.250	1.250	4.531	2.250	2.281	1°30'	5		\$195.00	110
AXMT17	WEX31000EW	1.000	1.000	3.811	1.530	2.281	5°	2	\$160.00	80	
	WEX31000EMW	1.000	1.000	4.841	2.560	2.281	5°	2	\$173.00	80	
	WEX31000ELW	1.000	1.000	6.341	4.060	2.281	5°	2	\$177.00	80	
	WEX31250EW	1.250	1.250	4.531	2.250	2.281	3°	3	\$169.00	100	
	WEX31250EMW	1.250	1.250	6.381	4.100	2.281	3°	3	\$181.00	90	
	WEX31500EW	1.500	1.250	4.531	2.250	2.281	2°	4	\$214.00	100	
	WEX32000EW	2.000	1.250	4.531	2.250	2.281	2°	5	\$247.00	120	

*Suggested Retail Price in USD

**Kit includes:
Milling Cutter
and 10 Inserts**



Catalog No.	Dimensions (Inches)							Ramp Angle	# of Teeth	Buy 1 Get 1 FREE	WEX Kit Price*	Buy Inserts Get Cutter FREE	
	D	d_1	d_2	a	t	H	h						
AXMT12	WEX21500R	1.500	0.750	0.406	0.312	0.187	1.562	0.750	2°	6	BUY ONE GET ONE FREE	\$302.00	130
	WEX22000R	2.000	0.750	0.406	0.312	0.187	1.562	0.750	1°	7		\$325.00	140
	WEX22500R	2.500	1.000	0.531	0.375	0.218	1.562	0.750	0°30'	8		\$351.00	150
AXMT17	WEX32000R	2.000	0.750	0.406	0.312	0.187	1.562	0.750	1°	5	\$243.00	120	
	WEX32500R	2.500	1.000	0.531	0.375	0.218	1.562	0.750	0°30'	6	\$276.00	130	
	WEXC33000R	3.000	1.000	0.531	.0375	0.218	1.750	0.750	0°30'	5	\$255.00	120	
	WEX33000R	3.000	1.000	0.531	0.375	0.218	1.750	0.750	0°30'	7	\$301.00	150	
	WEXC34000R	4.000	1.250	0.656	0.500	0.281	2.000	0.750	N/A	6	\$288.00	130	
	WEX34000R	4.000	1.250	0.656	0.500	0.281	2.000	0.750	N/A	8	\$350.00	160	
	WEXC36000R	6.000	1.500	1.500	0.625	0.380	2.500	1.060	N/A	8	\$750.00	260	
	WEX38000R	8.000	2.500	2.500	1.000	0.560	2.500	1.250	N/A	12	\$1,165.00	400	

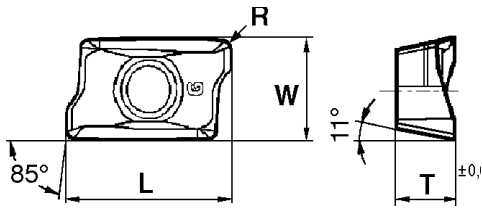
*Suggested Retail Price in USD

**Kit includes:
Milling Cutter
and 10 Inserts**

Offer valid through June 30, 2014

WEX Indexable Milling

Inserts



Max. Depth of Cut

AXMT12: 10mm (.394")

AXMT17: 14mm (.551")

WEX2000 Inserts

Insert	P		K		M		S		N		Dimensions (Inches)				
	ACP200	ACP300	ACK200	ACK300	ACM200	ACM300	DL1000	H1	L	W	T	R	Facet Width		
AXMT123504PEERG	●	●	●	●							.472	.260	.138	.016	.061
AXMT123504PEERH	●	●	●	●							.472	.260	.138	.016	.061
AXMT123508PEERG	●	●	●	●							.472	.260	.138	.031	.061
AXMT123508PEERH	●	●	●	●							.472	.260	.138	.031	.061
AXMT123512PEERG	●	●	●	●							.472	.260	.138	.047	.061
AXMT123512PEERH	●	●	●	●							.472	.260	.138	.047	.061
AXMT123504PEERE					●	●					.472	.260	.138	.016	.061
AXMT123508PEERE					●	●					.472	.260	.138	.031	.061
AXMT123508PEEREH					●	●					.472	.260	.138	.031	.061
AXMT123512PEERE					●	●					.472	.260	.138	.047	.061
AXMT123516PEERE					●	●					.472	.260	.138	.063	.061
AXET123502PEFRS							●	●			.472	.260	.138	.047	.061
AXET123504PEFRS							●	●			.472	.260	.138	.016	.061
AXET123508PEFRS							●	●			.472	.260	.138	.031	.061

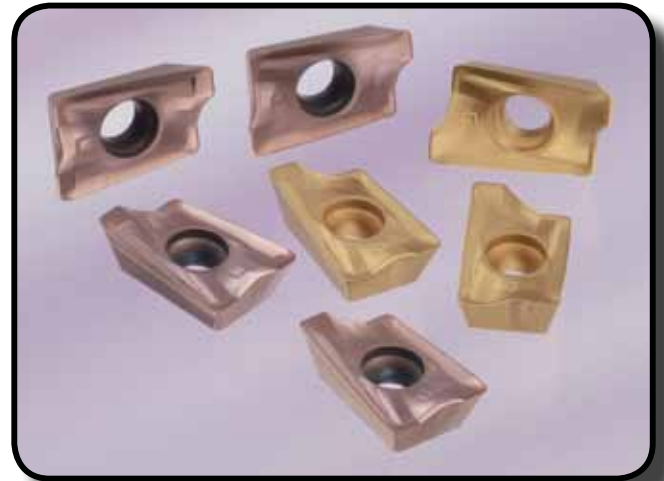
WEX3000 Inserts

Insert	P		K		M		S		N		Dimensions (Inches)				
	ACP200	ACP300	ACK200	ACK300	ACM200	ACM300	DL1000	H1	L	W	T	R	Facet Width		
AXMT170504PEERG	●	●	●	●							.689	.402	.219	.016	.118
AXMT170508PEERG	●	●	●	●							.689	.402	.219	.031	.118
AXMT170508PEERH	●	●	●	●							.689	.402	.219	.031	.118
AXMT170508PEERL	●	●	●	●							.689	.402	.219	.031	.118
AXMT170512PEERG	●	●	●	●							.689	.402	.219	.047	.118
AXMT170512PEERH	●	●	●	●							.689	.402	.219	.047	.118
AXMT170516PEERG	●	●	●	●							.689	.402	.219	.063	.118
AXMT170520PEERG	●	●	●	●							.689	.402	.219	.079	.118
AXMT170530PEERG	●	●	●	●							.689	.402	.219	.118	.118
AXMT170532PEERG	●										.689	.402	.219	.126	.118
AXMT170504PEERE					●	●					.689	.402	.219	.016	.118
AXMT170508PEERE					●	●					.689	.402	.219	.031	.118
AXMT170508PEEREH					●	●					.689	.402	.219	.031	.118
AXMT170512PEERE					●	●					.689	.402	.219	.047	.118
AXMT170516PEERE					●	●					.689	.402	.219	.063	.118
AXMT170520PEERE					●	●					.689	.402	.219	.079	.118
* AXMT170524PEERE					●	●					.689	.402	.219	.094	.118
* AXMT170530PEERE					●	●					.689	.402	.219	.118	.118
* AXMT170531PEERE					●	●					.689	.402	.219	.122	.118
* AXMT170548PEERE					●	●					.689	.402	.219	.189	.118
* AXMT170563PEERE					●	●					.689	.402	.219	.248	.118
AXET170502PEFRS							●	●			.689	.402	.219	.008	.118
AXET170504PEFRS							●	●			.689	.402	.219	.016	.118
AXET170508PEFRS							●	●			.689	.402	.219	.031	.118

* : insert radii expansion

**New Insert
Radii Expansion!**

**Now available
in ACM grades for
Stainless Steel and
Exotic Materials!**



WFX Indexable Milling

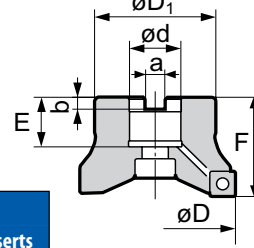
4-cornered Shoulder Mills



Features & Benefits

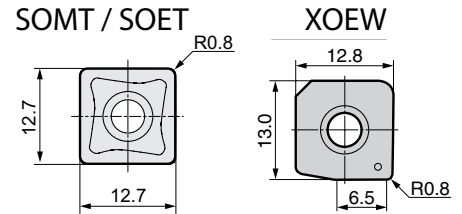
WFX is a screw-down type cutter capable of using four-cornered inserts. Ideal cutting edge design offers exceptional squareness. The insert shape is optimized for shoulder milling. When combined with a high-precision body it leaves a superior machined surface finish.

- Maximum depth of cut (a_p): 0.394" (10.0mm)
- With oil hole: $\phi 5.0$ " or less
- Three types of chipbreakers



**Superb
90 degree
sidewall
accuracy!**

WFX Cutter Bodies - Coarse Pitch - Inch									Buy 1 Get 1 FREE	WFX Kit Price*	Buy Inserts Get Cutter FREE
Catalog No.	Dimensions (Inches)							# of Teeth			
	D	d_1	F	d	a	b	E				
WFX42000R	2.000	1.500	1.750	0.750	0.312	0.187	0.750	3	BUY ONE GET ONE FREE	\$247.00	80
WFX42500R	2.500	1.750	1.750	1.000	0.375	0.218	0.750	4		\$279.00	90
WFX43000R	3.000	2.250	1.750	1.000	0.375	0.218	0.750	4		\$318.00	90
WFX44000R	4.000	2.870	2.000	1.250	0.500	0.280	0.750	5		\$376.00	100
WFX45000R	5.000	3.750	2.500	1.500	0.625	0.380	1.000	6		\$486.00	120
WFX46000R	6.000	4.380	2.500	1.500	0.625	0.380	1.060	8		\$653.00	170
WFX48000R	8.000	5.120	2.500	2.500	1.000	0.560	1.595	10		\$868.00	210



WFX Cutter Bodies - Fine Pitch - Inch									Buy 1 Get 1 FREE	WFX Kit Price*	Buy Inserts Get Cutter FREE
Catalog No.	Dimensions (Inches)							# of Teeth			
	D	d_1	F	d	a	b	E				
WFXF42000R	2.000	1.500	1.750	0.750	0.312	0.187	1.020	4	BUY ONE GET ONE FREE	\$273.00	90
WFXF42500R	2.500	1.750	1.750	1.000	0.375	0.218	1.020	5		\$318.00	100
WFXF43000R	3.000	2.250	1.750	1.000	0.375	0.218	1.020	6		\$363.00	110
WFXF44000R	4.000	2.870	2.000	1.250	0.500	0.280	1.060	7		\$415.00	120
WFXF45000R	5.000	3.750	2.500	1.500	0.625	0.380	1.060	8		\$544.00	140
WFXF46000R	6.000	4.380	2.500	1.500	0.625	0.380	1.060	12		\$752.00	180
WFXF48000R	8.000	5.120	2.500	2.500	1.000	0.560	1.595	16		\$977.00	240

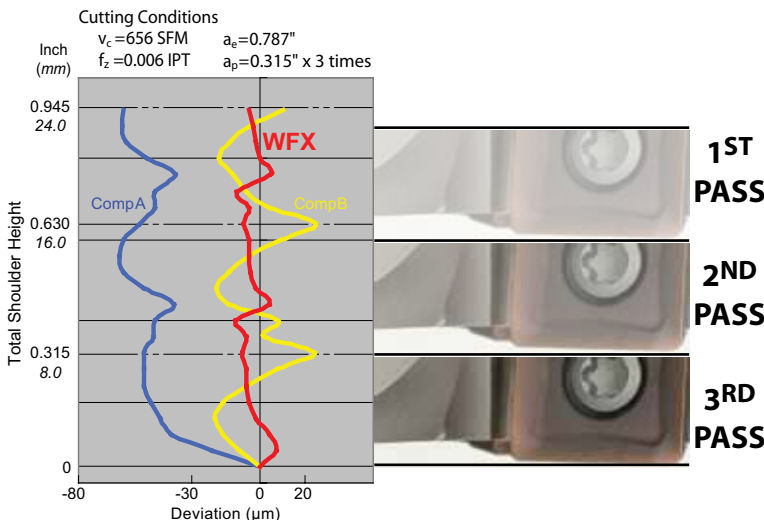
Catalog No.	P		K		M		N		
	ACP100	ACP200	ACP300	ACK200	ACK300	ACM200	ACM300	DL1000	HT
SOMT 120408PDER-L	●	●	●	●	●				
SOMT120404PDER-G	●	●	●	●	●				
SOMT120408PDER-G	●	●	●	●	●	●	●		
SOMT120412PDER-G	●	●	●	●	●				
SOMT120416PDER-G	●	●	●	●	●				
SOMT120408PDER-H	●	●	●	●	●	●	●		
SOET120408PDRF-S								●	●
XOEW120408PDTR-W				●					

WFX Cutter Bodies - Fine Pitch - Inch									Buy 1 Get 1 FREE	WFX Kit Price*	Buy Inserts Get Cutter FREE
Catalog No.	Dimensions (Inches)							# of Teeth			
	D	d_1	F	d	a	b	E				
WFXX42000R	2.000	1.500	1.750	0.750	0.312	0.187	1.020	5	BUY ONE GET ONE FREE	\$292.00	100
WFXX42500R	2.500	1.750	1.750	1.000	0.375	0.218	1.020	6		\$337.00	110
WFXX43000R	3.000	2.250	1.750	1.000	0.375	0.218	1.020	8		\$408.00	130
WFXX44000R	4.000	2.870	2.000	1.250	0.500	0.280	1.060	10		\$571.00	150
WFXX45000R	5.000	3.750	2.500	1.500	0.625	0.380	1.060	12		\$726.00	170

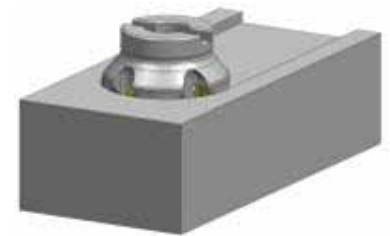
Squareness Comparison Chart

*Suggested Retail Price in USD

**Kit includes:
Milling Cutter
and 10 Inserts**



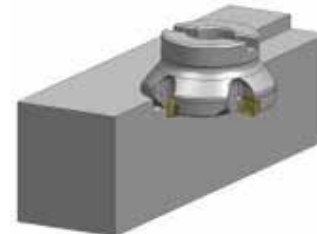
Slot Milling



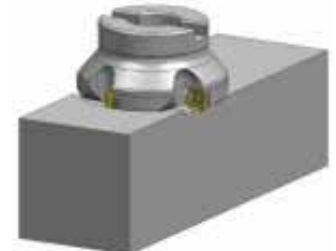
Side - Face Milling



Shoulder Milling



Face Milling



Offer valid through June 30, 2014

**Coated Grades
ACP / ACK / ACM
DL1000
& H1**



**4TH WAY TO SAVE:
INSERT PROMOTION**

**Buy 30 Inserts
Get 10 FREE!**



Grade Applications

• for Steel & Stainless Steel

Grade	Coating	Description
ACP100	CVD	Al ₂ O ₃ based "Super FF" coating with an ultra fine TiCN layer for high speed and wet cutting of steels and stainless steels; super tough substrate for better wear and thermal cracking resistance.
ACP200	PVD	Multi-layered "Super ZX" coating consisting of nanometer thick TiAlN and AlCrN layers, coupled with fine-grained tough substrate for excellent balance of fracture and wear resistance; for general purpose milling of steels and stainless steels.
ACP300	PVD	Multi-layered "Super ZX" coating consisting of nanometer thick TiAlN and AlCrN layers, coupled with fine-grained super tough substrate for excellent fracture resistance; ideal for interrupted machining of steels and stainless steels.

• for Cast Iron

Grade	Coating	Description
ACK200	CVD	Al ₂ O ₃ based "Super FF" coating with an ultra fine TiCN layer provides excellent anti-adhesion and wear resistance in general purpose milling of gray and ductile cast irons.
ACK300	PVD	Multi-layered "Super ZX" coating consisting of nanometer thick TiAlN and AlCrN layers, coupled with fine-grained super tough substrate for excellent fracture resistance; for general to interrupted machining of gray and ductile cast irons.

• for Superalloys and Stainless Steels

Grade	Coating	Description
ACM200	CVD	Al ₂ O ₃ based "Super FF" coating with an ultra fine TiCN layer provides excellent anti-adhesion and wear resistance in general purpose milling of superalloys and stainless steels.
ACM300	PVD	Multi-layered "Super ZX" coating consisting of nanometer thick TiAlN and AlCrN layers, coupled with fine-grained super tough substrate for excellent fracture resistance; for general to interrupted machining of superalloys and stainless steels.

NEW

NEW

• for Non-ferrous Material

Grade	Coating	Description
DL1000	DLC	"Diamond-like Carbon" coated grade with exceptional wear resistance and superior surface finish capabilities when milling non-ferrous materials.
H1	J-Polish	Uncoated carbide grade with "J-Polish" to reduce chip adhesion when finish milling non-ferrous materials



SUMITOMO

CARBIDE - CBN - DIAMOND

Sumitomo Electric Carbide, Inc.

Headquarters

1001 Business Center Drive
Mount Prospect, IL 60056-2181
P.O. Box 545, Mt. Prospect, IL 60056-0545
Phone: (800) 950-5202
Phone: (847) 635-0044
Fax: (847) 635-7866
<http://www.sumicarbide.com>

Detroit Branch

14496 Sheldon Road #230
Plymouth, MI 48170
Phone: (800) 239-5177
Phone: (734) 451-0200
Fax: (734) 451-5338

Sumitomo Electric Tool Engineering Center

5637 S. Westridge Drive
New Berlin, WI 53151
Phone: (800) 950-5202

Huntsville Branch

6700 Odyssey Drive
Suite 211
Huntsville, AL 35806
Phone: (256) 971-1203
Fax: (256) 971-1205

Cincinnati Branch

4450 Carver Woods Drive
Cincinnati, OH 45242-5545
Phone: (800) 879-1887
Phone: (513) 891-4000
Fax: (513) 794-2911

Torrance Branch

21241 South Western Avenue
Suite 120
Torrance, CA 90501
Phone: (800) 950-5202
Fax: (310) 782-0211

Sumicarbide Canada, Inc.

2600 Skymark Avenue
Building 6, Suite 103
Mississauga, ON L4W 5B2
Canada
Phone: (905) 282-9986
Fax: (905) 282-9984

